



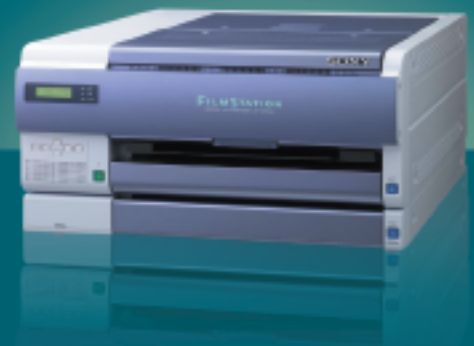
UP-DF550 FilmStation™ Dual Tray Film Imager

The Sony FilmStation Dual Tray Imager is a unique multi-film imager built on the design platform of the UP-DF500 FilmStation Imager. The Dual Tray film imager incorporates many of the same unique features of our UP-DF500 model and adds a second output tray to accommodate multiple film sizes including 8 x 10", 10 x 12" and 11 x 14".

This added feature gives the end user the built-in capability to produce film prints for a variety of modalities as well as low cost copies ideal for patient referrals. The UP-DF550 can be mounted horizontally or vertically which is a major advantage over other large centralized film imagers.

The UP-DF550 Dual Tray Film Imager is an ideal choice for many modalities such as CT, MR, DR, CR and X-Ray.

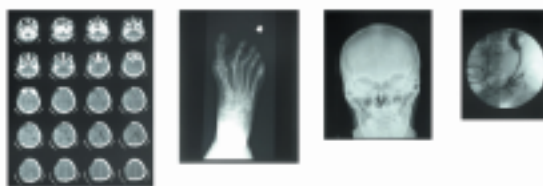
- Ideal for many modalities including CT, MR, CR, DR and Ultrasound
- Two trays to accommodate multiple film sizes
- Second tray supports 8 x 10", 10 x 12", 11 x 14" sizes
- Fast throughput – 70 films per hour
- Outputs economical patient referral copies
- Built-in DICOM 3.0 Interface
- Intelligent Memory – printer settings including IP address can be saved on Memory Stick® media in the event of a swap out
- Unique vertical installation option saves space



Specifications

Power Requirements	100 to 240 V AC, 50/60 Hz
Input Current	4.4 to 1.8 A
Operating Temperature	10°C to 30°C (50°F to 86°F)
Operating Humidity	20% to 80% (no condensation allowed)
Operating Pressure	700 hPa to 1060 hPa
Storage and Transport Temperature	-20°C to +60°C (-4°F to +140°F)
Storage and Transport Humidity	20% to 80% (no condensation allowed)
Storage and Transport Pressure	700 hPa to 1060 hPa
Dimensions	About 600 x 316 x 686 mm (w/h/d) (23 5/8 x 12 1/2 x 27 1/2 inches)
Mass	Approx. 63 kg (138 lb 14 oz)
Printing System	Thermal Printing
Resolution	12.59 dot/mm (320 dpi)
Gradations	4,096 levels
Maximum Print Size	401.8 x 335.4 mm (when using the UPT-517BL)
Picture Elements	4,360 x 5,232 dots (w/h)
Printing Time	Approx. 70 sheets/hour (excluding the time for cooling the head and when using the UPT-517BL)
Digital Interface	Network port x 1 (RJ-45 Modular jack), Conforming to 100BASE-TX standard
Input Connector	AC IN (for power)
Accessories Supplied	Media starter pack – UPT-517BL (125 sheets) Cleaning Kit (1) Caster for setting the printer vertically (2) Stopper sheet (1) Operating Guide(1) CD-ROM (1) Floppy Disk (1) Warranty card (1) (for the customer in the U.S.A and Canada)
Accessories Supplied Separately	Blue Thermal Film Printing Pack UPT-517BL (14 x 17") Blue Thermal Film Printing Pack UPT-514BL (11 x 14") Blue Thermal Film Printing Pack UPT-512BL (10 x 12") Blue Thermal Film Printing Pack UPT-510BL (8 x 10") Cleaning Kit UPA-500

Design and specifications are subject to change without notice.



Multiple Film Sizes



UP-DF550 Rear Panel

Print Media



UPT-517BL Media (14 x 17")
Blue Thermal Film Printing Pack
Contents: 125 sheets per pack



UPT-514BL Media (11 x 14")
Blue Thermal Film Printing Pack
Contents: 125 sheets per pack



UPT-512BL Media (10 x 12")
Blue Thermal Film Printing Pack
Contents: 125 sheets per pack



UPT-510BL Media (8 x 10")
Blue Thermal Film Printing Pack
Contents: 125 sheets per pack

Sony engineered thermal film media was specifically designed for use with the FilmStation imager.

SONY®

Sony Electronics Inc.
1 Sony Drive
Park Ridge, NJ 07656

www.sony.com/medical

©2007 Sony Electronics Inc. All rights reserved. Reproduction in whole or in part without written permission is prohibited. Features and specifications are subject to change without notice. All non-metric weights and measures are approximate. Sony, FilmStation and Memory Stick are registered trademarks of Sony Electronics. Windows is a registered trademark of Microsoft Corporation. Caution: Federal (USA) law restricts this device to sale by or on the order of a physician or other appropriately licensed medical professional. Caution: See product labeling for indications, contraindications, warnings, cautions and directions for use.

ME-UPDF550